



Myra
TENUMAN

HALAMAN 2

BUNGALOW



Tenuman is inspired by the spirit of 'tenun' the art of weaving & combined with 'halaman' a shared living space. Together, they reflect the idea of weaving people, cultures, and experiences into one harmonious community. Just as individual threads are woven to create something stronger and more beautiful, Tenuman brings neighbours together, fostering togetherness, connection, and a sense of belonging within a vibrant township.

This is home, truly.



THE ARCHITECTURE

Residences are thoughtfully crafted with unique designs where light and space are woven into every home, creating calm, open interiors shaped for living whether it is landed homes designed for multigenerational living or high-rise residences offering contemporary tranquility, there is an abode to complement every lifestyle.



THE COMMUNITY

The Village is a welcoming social hub designed with people in mind, where spaces are woven to bring people and moments together fostering a strong sense of community, nurturing a neighbourly way of life, and creating vibrant days at leisure while deepening meaningful connections.



THE ENVIRONMENT

Sited in a serene location, the Central Lake Park forms the heart of the neighbourhood, where surrounding views of the tranquil lake and thriving greenery weave a sense of timelessness and nostalgia into an idyllic setting fulfilling the promise of blissful, enduring living at every turn.



Artist's impression

The Pinnacle of Lakeside Living

Halaman 2 at Myra Tenuman offers an exclusive collection of just 46 bungalows, making it the most coveted address within the township. Positioned closest to the central pond, each home enjoys serene views, gentle reflections, and a sense of openness that invites calm and connection.

Close to nature, close to family, and close to everything that matters, this is a home that feels as if it has always been waiting for you.



A warm welcome,
always



Artist's impression



Step out onto the veranda by the pond, where outdoor spaces become a natural extension of the home, seamlessly blending indoors with the outdoors. Daily life is framed by water, light, and open views, with mornings shaped by serene stillness.

Thoughtfully designed for optimal ventilation and sightlines, these spaces create a gentle every day to flow with calm and effortless grace.



Moments just for you

A true master bedroom should feel like more than just a room. It should feel like a retreat.

Here, it's reimagined with a balcony that opens to views you'll never tire of, and a bathtub designed for unhurried evenings. This isn't just where you sleep it's where you pause, recharge, and find yourself again at the end of every day.





Artist's impression

Space that breathes

Some homes feel closed in. Walls closing in. Ceilings pressing down. Halaman 2 does the opposite. With double-volume living spaces, light spills in, air flows through, and every corner feels open and alive.

It's not just bigger rooms it's bigger moments. Room for ideas. Room for family. Room for life to stretch out instead of squeeze in.

Because home should never shrink you. It should set you free.



Artist's impression



Artist's impression

Your own patch of earth

Every family dreams of a space that's theirs alone.
At Halaman 2, you have it your own patch of earth.
A garden for sunrise yoga. A play space where your little ones can tumble and run. Or maybe the beginnings of an urban farm, fresh herbs just steps away.

It's freedom under open skies. The kind of space that grows with you, season after season.



A place for pause

Every home needs a heart.

At Halaman 2, it's the courtyard. Green, sheltered, alive. A place where mornings begin with birdsong, afternoons echo with laughter, and evenings slow down under soft light.

It's where kids chase each other barefoot. Where family conversations stretch longer than planned. Where nature isn't something you visit it's part of your everyday. This is what it means to have a sanctuary that truly breathes with you.

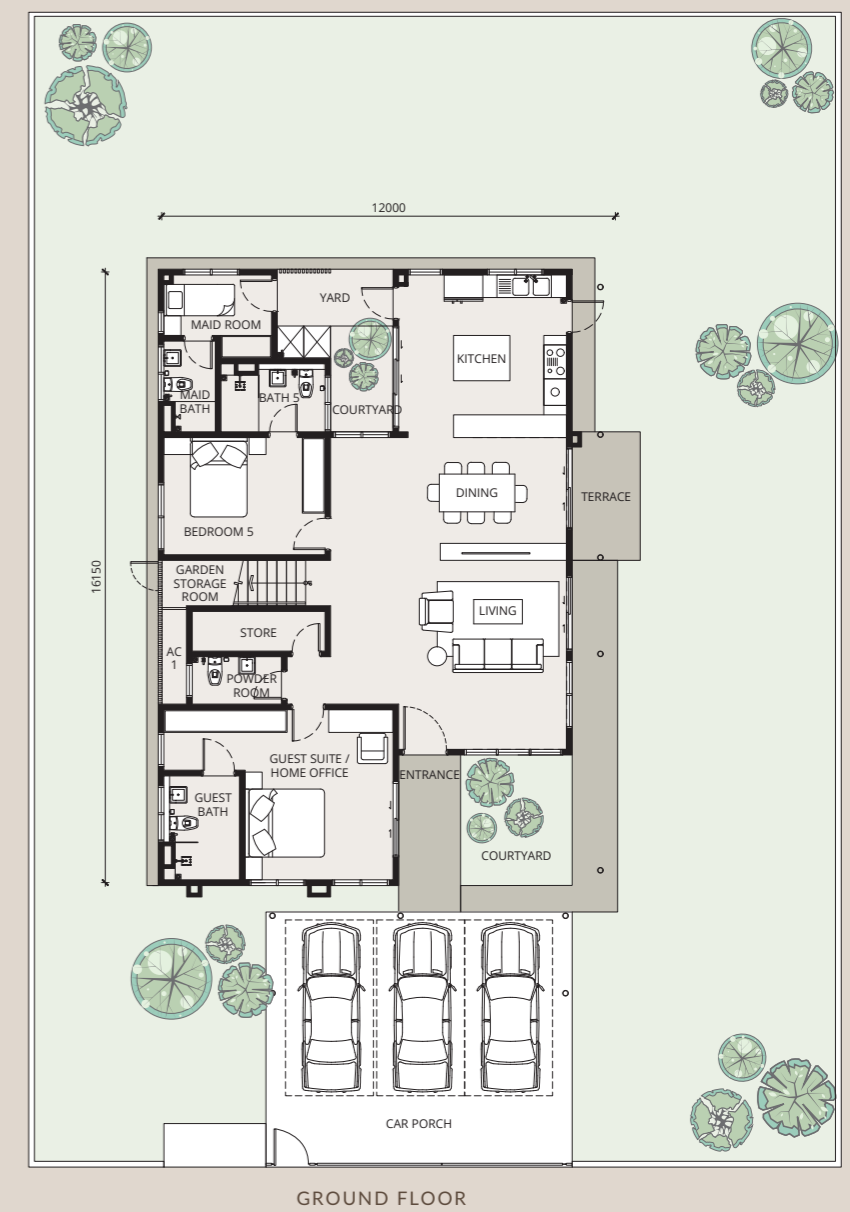
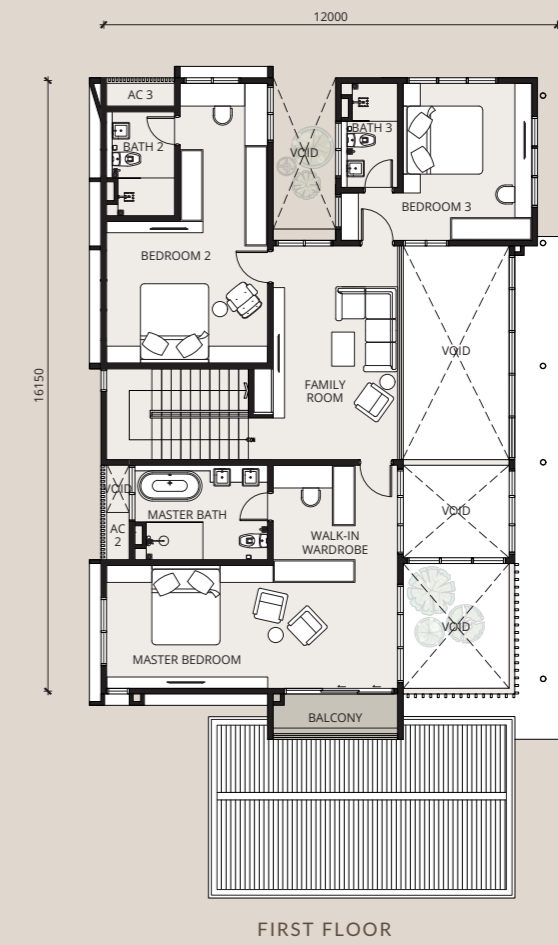




TYPE VI BUNGALOW

	Land size*	70' x 100'
	Built-up size	3,765 sq. ft.
	Bedrooms	5+1 Bedrooms
	Bathrooms	6+1 Bathrooms

* Land sizes may vary.





TYPE V2 BUNGALOW

-  Land size* 70' x 100'

-  Built-up size 3,982 sq. ft.

-  Bedrooms 4+1 Bedrooms

-  Bathrooms 5+1 Bathrooms

* Land sizes may vary.





Specifications

STRUCTURE	Reinforced Concrete Frame	
WALL	Brick Wall	
ROOF COVER	Reinforced Concrete Flat Roof / Metal Deck	
ROOF STRUCTURE	Reinforced Concrete Flat Roof / Metal Frame	
CEILING	Skim Coat / Plaster Ceiling / Fibre Cement Ceiling	
WINDOWS	Aluminium Frame Glass Window	
DOORS	Flush Door / Aluminium Sliding Glass Door	
IRONMONGERY	Selected Locksets	
WALL FINISHES	Selected Tiles Up To Ceiling Height Selected Tiles Up To Ceiling Height Selected Tiles Plaster & Paint Finish	
	TYPE V1	TYPE V2
FLOOR FINISHES	Living, Dining, Kitchen, Master Bedroom, Bedroom 2, Bedroom 3, Guest Room, Bedroom 5, Family, Balcony, Master Bath, Bath 2, Bath 3, Guest Bath, Bath 5, Bath 6, Toilet, Store, Maid Room, Yard, Terrace, Entrance, Refuse Compartment - Selected Tiles	Living, Dining, Kitchen, Master Bedroom, Bedroom 2, Bedroom 3, Guest Room, Family, Balcony, Deck, Master Bath, Bath 2, Bath 3, Guest Bath, Bath 5, Toilet, Store, Maid Room, Yard, Lanai, Terrace, Entrance, Refuse Compartment - Selected Tiles
Staircase Car Porch Others	Timber Flooring Concrete Imprint Cement Render	
SANITARY WARE & PLUMBING	8 Nos 7 Nos 9 nos 6 nos 1 nos 1 nos	7 Nos 6 Nos 8 nos 5 nos 1 nos 1 nos
ELECTRICAL POINTS	40 Nos 26 Nos 1 Nos 8 Nos 1 Nos 8 Nos 1 Nos 1 Nos 1 Nos 2 Nos 1 Nos	42 Nos 26 Nos 1 Nos 8 Nos 1 Nos 7 Nos 1 Nos 1 Nos 1 Nos 2 Nos 1 Nos
FENCING	Brick Wall & Mild Steel / Steel Mesh	
GATE	Mild Steel	

DISCLAIMER: All the above specifications shall subject to variation, modifications and substitution as recommended by the architect and/ or as directed by the appropriate authorities.

MYRA TENUMAN

MASTER PLAN

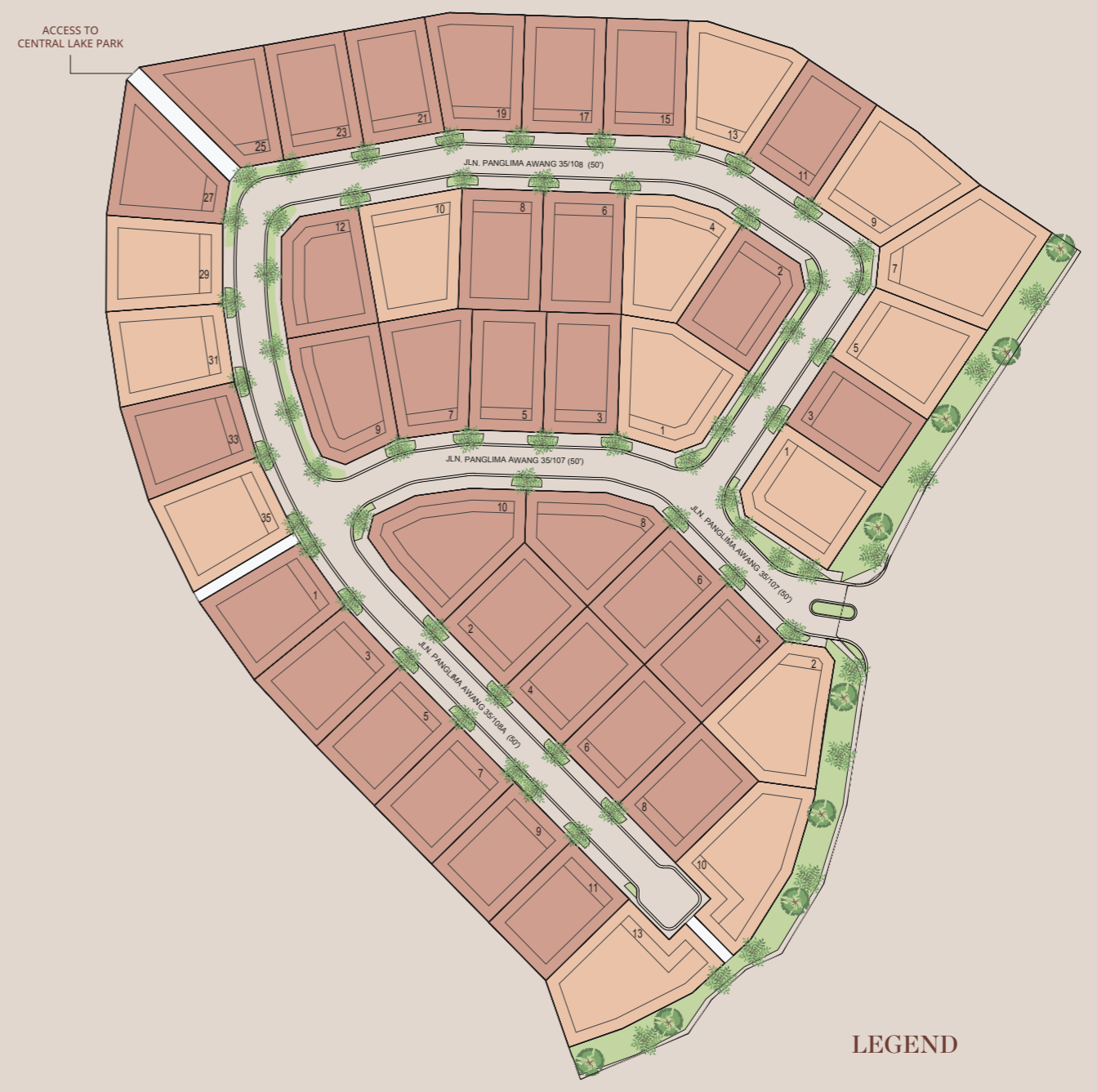


LEGEND

- Halaman 1
Semi-Detached & Bungalow
- Halaman 2 NOW LAUNCHING
Bungalow
- Halaman 3, 4
(Future Development)
- Mixed Development
(Future Development)

HALAMAN 2

SITE PLAN



LEGEND

- Bungalow Type V1
(32 units)
- Bungalow Type V2
(14 units)

A place for the community

Wellness Zone



- 1 Therapeutic Garden
- 2 Healing Garden
- 3 Yoga Lawn
- 4 Forest Grove

Leisure Zone



- 9 Picnic Lawn
- 10 Feature Seating
- 11 Gazebo
- 12 Grand Staircase
- 13 Wheelchair Ramp
- 14 Lily Pond

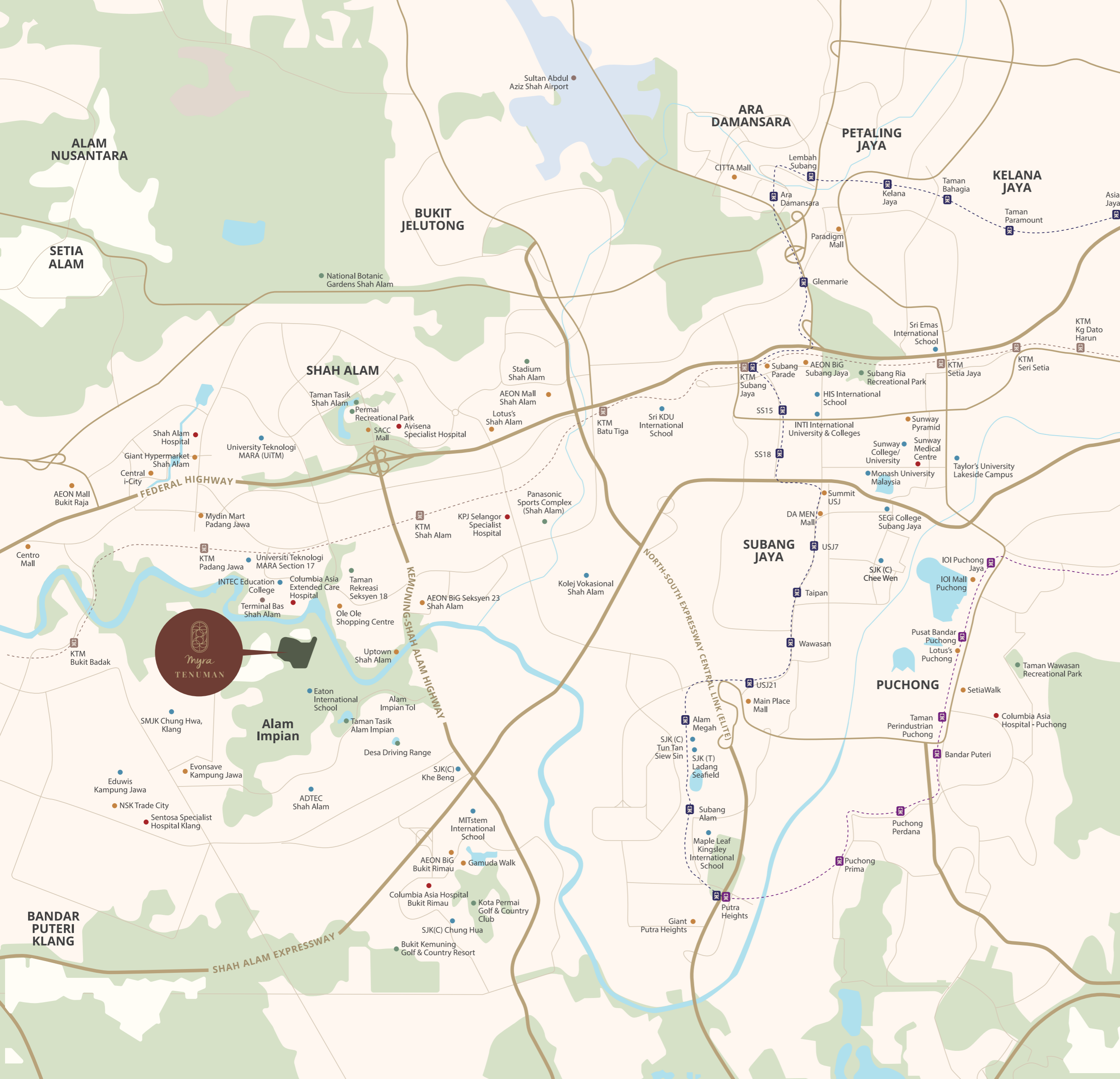


Energy Zone



- 5 Play Element
- 6 Multipurpose Court
- 7 Playground
- 8 Outdoor Fitness Yard





EDUCATION

Smart Reader Kids Plus Plus Alam Impian	2 KM
SMJK Chung Hwa, Klang	4 KM
Eaton International School @ Setia Alam	4 KM
Eduwis Kampung Jawa	6 KM
MITstem International School	8 KM
INTEC Education College	8 KM
ADTEC Shah Alam	9 KM
SJK(C) Khe Beng	9 KM
SJK(C) Chung Hua	9 KM
Universiti Teknologi MARA (UiTM) Section 17	10 KM
Sri KDU International School	12 KM
Maple Leaf Kingsley International School	15 KM
HIS International School	16 KM
INTI International University & Colleges	16 KM
MAHSA International School	17 KM
Sunway University	18 KM
Sunway College	18 KM
Monash University Malaysia	18 KM
Sri Emas International School	18 KM
SJK(C) Chee Wen	20 KM

MEDICAL CENTRE

Sentosa Specialist Hospital Klang	6 KM
Columbia Asia Extended Care Hospital	8 KM
Avisena Specialist Hospital	9 KM
Columbia Asia Hospital – Bukit Rimau	10 KM
Tengku Ampuan Rahimah Hospital, Klang	11 KM
Shah Alam Hospital	12 KM
Columbia Asia Hospital - Puchong	17 KM
Sunway Medical Centre	18 KM

SHOPPING MALL AND SUPERMARKET

Eonsave Kampung Jawa	4 KM
Ole Ole Shopping Centre	6 KM
NSK Trade City	6 KM
AEON BIG Seksyen 23, Shah Alam	6 KM
Uptown Shah Alam	6 KM
Mydin Seksyen 18	7 KM
SACC Mall	8 KM
Centro Mall	8 KM
Gamuda Walk	8 KM
AEON BIG Bukit Rimau	8 KM
Mydin Mart Padang Jawa	10 KM
AEON Mall Bukit Raja	10 KM
Central i-City	10 KM
Giant Hypermarket Shah Alam	11 KM
Lotus's Shah Alam	12 KM
AEON Mall Shah Alam	13 KM
Main Place Mall	13 KM
Summit USJ	16 KM
Da Men Mall	16 KM
AEON BIG Subang Jaya	17 KM
Mydin Subang Jaya Hypermarket	17 KM
Lotus's Puchong	17 KM
SetiaWalk	18 KM

LEISURE PARKS

Taman Tasik Alam Impian	3 KM
Lakeside Alam Impian	3 KM
Desa Driving Range	6 KM
Taman Rekreasi Seksyen 18	7 KM
Kota Permai Golf & Country Club	9 KM
Panasonic Sports Complex (Shah Alam)	9 KM
Taman Tasik Shah Alam (Tasik Tengah)	9 KM
Permai Recreational Park	10 KM
Bukit Kemuning Golf & Country Resort	10 KM
National Botanic Gardens Shah Alam	13 KM
Stadium Shah Alam	13 KM
Subang Ria Recreational Park	17 KM
Sunway Lagoon	19 KM

- Transportation**
- Sultan Abdul Aziz Shah Airport
 - LRT Sri Petaling Line
 - LRT Kelana Jaya Line
 - KTM Tanjung Malim-Port Klang Line

A woman and a child are walking away from the camera in a sunlit field. The woman is wearing a white dress with a floral pattern, and the child is wearing a pink and white checkered dress. They are holding hands and looking towards the right. The background is a bright, hazy landscape with trees and a large sun flare on the left side.

Myra

The connoisseur of space

The heart of Myra is rooted in its commitment to create beautiful and functional homes for various lifestyle needs. With a wealth of experience in property development and construction, and the realisation of over 28,000 homes worth over RM3 billion, it has built a respectable reputation for itself, with an eye for creative and thoughtful space planning.

Bringing a home to life

Led by Tangu Architecture, Myra Tenuman celebrates the concept of a "Green Village Compound", taking inspiration from the traditional Malay idea of "halaman" to foster a sense of openness, community, and harmony with nature.

The bungalows and semi-detached homes integrate design choices like open plan layouts, transitional spaces, large windows, and outdoor areas - blending the boundaries between indoor comfort and outdoor serenity, while promoting eco-conscious values. This creates a development that merges contemporary tropical design with cultural sensitivity, producing exquisite yet functional, adaptable, and sustainable homes.


A landscape shaped by nature

The Myra Tenuman landscape is one rooted in mindfulness and sustainability. Realised by Convergence by Design, the landscape design embraces the rhythms of the natural world, creating spaces that invite residents to connect with nature in meaningful ways.

Every element reflects a deep respect for the environment, while fostering a sense of balance and wellbeing. This nature-centered approach encourages a more intentional way of life, while creating an environment where the people and the land coexist in harmony, enriching daily experiences while nurturing the planet.

03 3385 4410

myratenuman.my

 Myra Tenunan Sales Gallery

The information contained in this material is subject to change and cannot form part of an offer or contract. All renderings are artist's impressions only. All measurements are approximate. While every reasonable care has been taken in preparing this material, the developer cannot be held responsible for an inaccuracy. All the above items are subject to variations, modifications & substitutions as may be required by the Authorities or recommended by the Architect or Engineer.

Pemaju: Total Majority Sdn Bhd (795559-V) | No Lesen Pemaju: 30962/02-2030/0018(N) | Tempoh Sah laku lesen: 02/12/2025 sehingga 01/12/2027 | No. Permit: 30962-2/12-2027/1004(N)-(L) | Tempoh Sah laku permit: 2 Tahun | Jenis Hakmilik: Kekal | Sekatan Kepentingan: Tiada | Pihak Berkuasa yang Meluluskan Pelan Bangunan: Majlis Bandaraya Shah Alam | No Rujukan: MBSA.BGN.600-3/2/374 | Jenis Rumah: Rumah Banglo | Bilangan Unit : 46 unit | Harga : RM 3,095,000 (Min) - RM 4,449,000 (Mak) | Tarikh Jangka Siap: Feb 2028 | Bebanan (gadaian) tanah: CIMB Bank Berhad | MAKLUMAT PEMAJUAN BOLEH DISEMAK MELALUI PORTAL TEDUH.KPKT.GOV.MY IKLAN IN TELAH DILULUSKAN OLEH JABATAN PERUMAHAN NEGARA